

STEP VAN, TRAILER AND  
**BOX TRUCK**  
2024



# UPFIT GUIDE





# HELPING MOBILE TECHNICIANS WORK MORE EFFECTIVELY BY PROVIDING ORGANIZED STORAGE SOLUTIONS

**AT RANGER DESIGN,  
WE BELIEVE MORE IS POSSIBLE.**

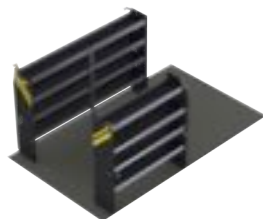
We believe work vehicles and the technicians who drive them can become more organized, efficient, productive, and profitable. At Ranger Design, we are committed to providing you with the products and services that make this possible.

More means helping you choose the right work van for your application, as well as giving you engineering support and expert advice to help design the most efficient work space in your new vehicle.

More also means getting that new van outfitted and on the road faster, so you can start using it for the reason you bought it.

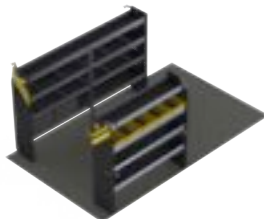
We're committed to bringing you more, because we believe more is possible.





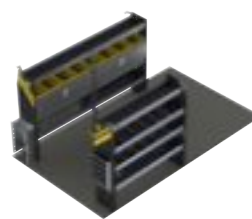
**CONTRACTOR**

P. 4



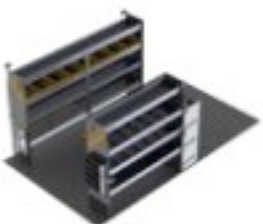
**SERVICE**

P. 5



**ELECTRICAL**

P. 6



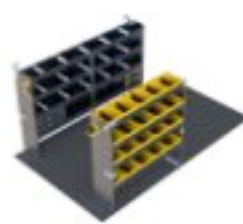
**HVAC**

P. 7



**DELIVERY**

P. 8



**ALUMINUM**

P. 9



**STORAGE**

P. 10



**ACCESSORIES**

P. 11



**DRAWERS**

P. 12

## Large Distributor Network Across the Continent

---

**Buy**

Ranger Design Quickship service is available through your local distributor. [rangerdesign.com/find-distributor](http://rangerdesign.com/find-distributor)

---

**Lead Time**

Quickship orders placed before 1PM EST, will ship from our factory in the next business day.

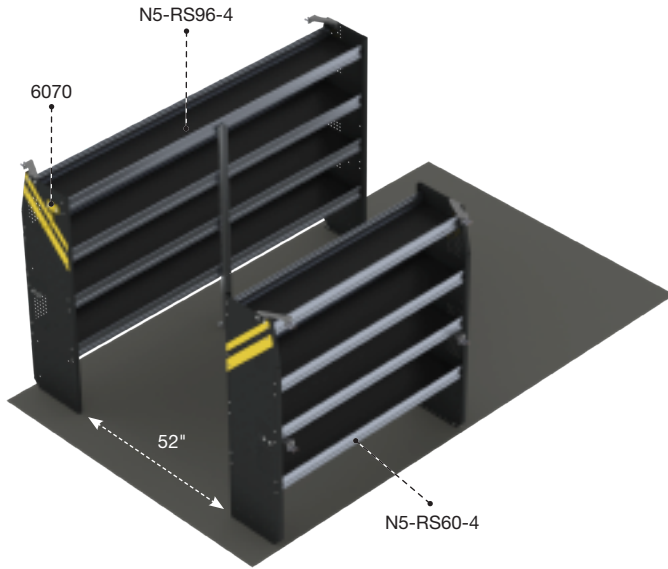
---



All products with this symbol are available on Quickship

# CONTRACTOR

CONTRACTOR



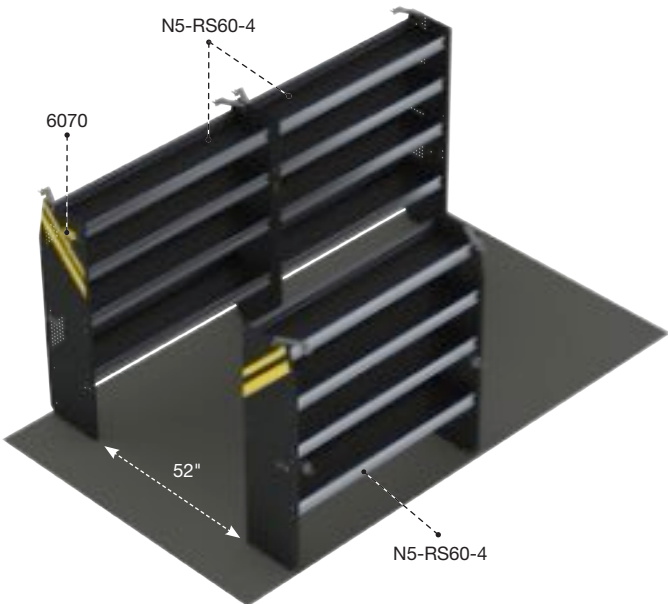
## BTS-10 CONTRACTOR

Steel	Short 10+	High Roof
211 lbs	2.8 hrs	Yes

Qty	Part	Description
1	6070	6" Hook, 3" opening, painted
1	N5-RS60-4	Steel shelving unit, 14" D x 60" W x 62" H
1	N5-RS96-4	Steel shelving unit, 14" D x 96" W x 62" H

Aisle space calculated for this package is based on an 84" wide box.

VISIT  
RANGERDESIGN.COM  
TO VIEW OUR  
SAFETY PARTITIONS:

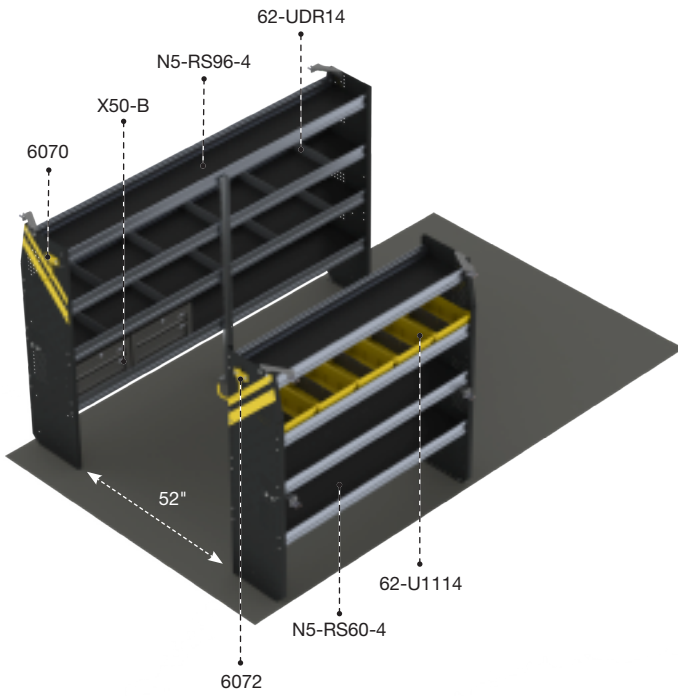


## BTL-10 CONTRACTOR

Steel	Long 14+	High Roof
266 lbs	3.8 hrs	Yes

Qty	Part	Description
1	6070	6" Hook, 3" opening, painted
3	N5-RS60-4	Steel shelving unit, 14" D x 60" W x 62" H

Aisle space calculated for this package is based on an 84" wide box.

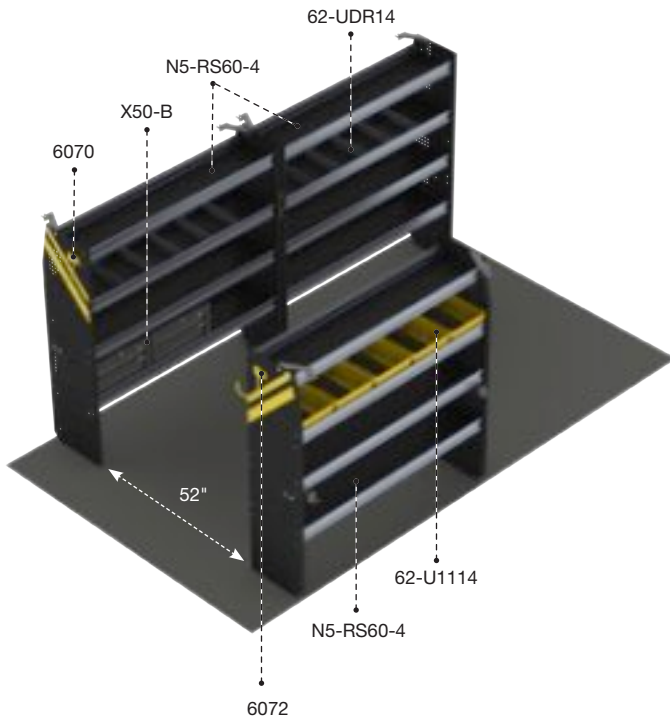


## BTS-16 SERVICE

Steel	Short 10+	High Roof
281 lbs	3.6 hrs	Yes

Qty	Part	Description
1	6070	6" Hook, 3" opening, painted
1	6072	8" Swivel hook, 4" opening, painted
5	62-U1114	14" Deep plastic bin
2	62-UDR14	Set of 5 dividers for a 14" shelf
1	N5-RS60-4	Steel shelving unit, 14" D x 60" W x 62" H
1	N5-RS96-4	Steel shelving unit, 14" D x 96" W x 62" H
2	X50-B	Compact 2-drawer unit

Aisle space calculated for this package is based on an 84" wide box.



## BTL-16 SERVICE

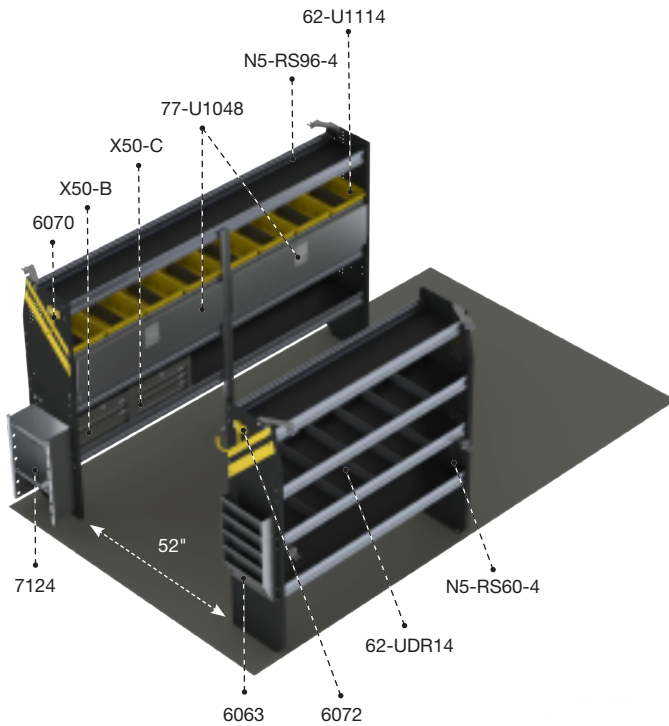
Steel	Long 14+	High Roof
336 lbs	4.6 hrs	Yes

Qty	Part	Description
1	6070	6" Hook, 3" opening, painted
1	6072	8" Swivel hook, 4" opening, painted
5	62-U1114	14" Deep plastic bin
2	62-UDR14	Set of 5 dividers for a 14" shelf
3	N5-RS60-4	Steel shelving units, 14" D x 60" W x 62" H
2	X50-B	Compact 2-drawer unit

Aisle space calculated for this package is based on an 84" wide box.

# ELECTRICAL

ELECTRICAL

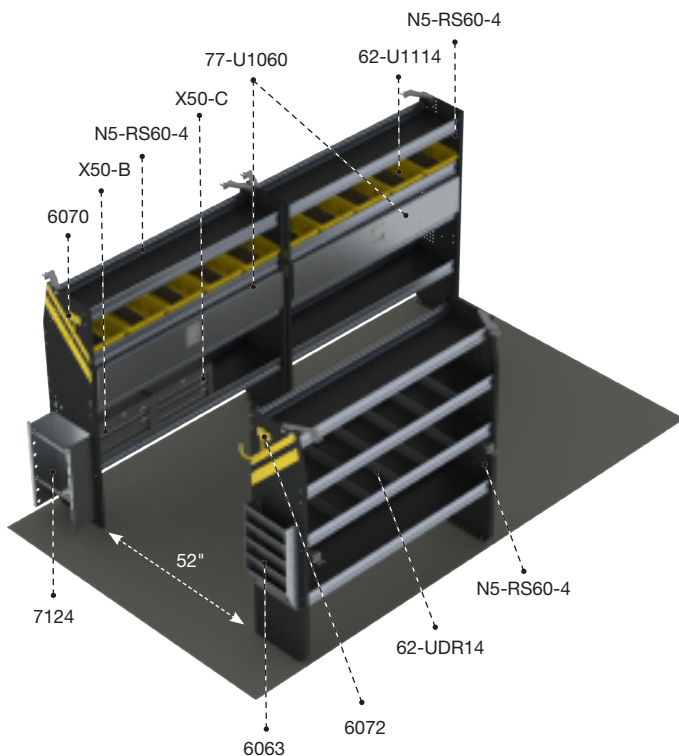


## BTS-11 ELECTRICAL

Steel	Short 10+	High Roof
324 lbs	5.3 hrs	Yes

Qty	Part	Description
1	6063	Paper holder, extra deep, 5 slots
1	6070	6" Hook, 3" opening, painted
1	6072	8" Swivel hook, 4" opening, painted
8	62-U1114	14" Deep plastic bin
2	62-UDR14	Set of 5 dividers for a 14" shelf
1	7124	Reel holder with two 5/8" diameter rods
2	77-U1048	Adjustable shelving door unit - 45" W - for 48" & 96" shelves
1	N5-RS60-4	Steel shelving unit, 14" D x 60" W x 62" H
1	N5-RS96-4	Steel shelving unit, 14" D x 96" W x 62" H
1	X50-B	Compact 2-drawer unit
1	X50-C	Compact 3-drawer unit

Aisle space calculated for this package is based on an 84" wide box.

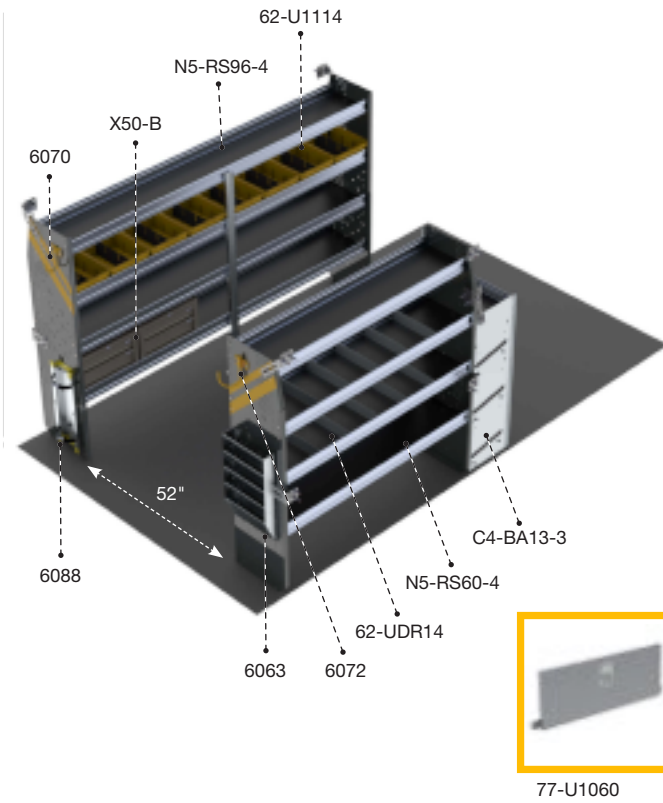


## BTL-11 ELECTRICAL

Steel	Long 14+	High Roof
386 lbs	6.3 hrs	Yes

Qty	Part	Description
1	6063	Paper holder, extra deep, 5 slots
1	6070	6" Hook, 3" opening, painted
1	6072	8" Swivel hook, 4" opening, painted
10	62-U1114	14" Deep plastic bin
2	62-UDR14	Set of 5 dividers for a 14" shelf
1	7124	Reel holder with two 5/8" diameter rods
2	77-U1060	Adjustable shelving door unit - 57" W - for 60" shelves
3	N5-RS60-4	Steel shelving unit, 14" D x 60" W x 62" H
1	X50-B	Compact 2-drawer unit
1	X50-C	Compact 3-drawer unit

Aisle space calculated for this package is based on an 84" wide box.



## BTS-12

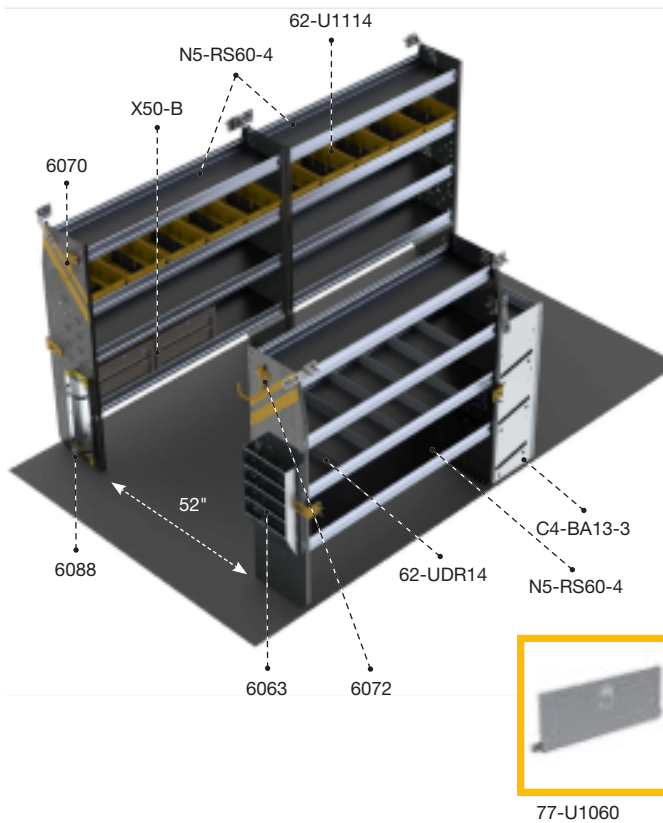
### HVAC

Steel	Short 10+	High Roof
334 lbs	5.1 hrs	Yes

Qty	Part	Description
1	C4-BA13-3	3 Tier refrigerant rack for large bottles
1	6063	Paper holder, extra deep, 5 slots
1	6070	6" Hook, 3" opening, painted
1	6072	8" Swivel hook, 4" opening, painted
1	6088	Large aluminum bottle holder, with two black nylon straps
8	62-U1114	14" Deep plastic bin
2	62-UDR14	Set of 5 dividers for a 14" shelf
1	77-U1060	Adjustable shelving door unit - 57" W - for 60" shelves
1	N5-RS60-4	Steel shelving unit, 14" D x 60" W x 62" H
1	N5-RS96-4	Steel shelving unit, 14" D x 96" W x 62" H
2	X50-B	Compact 2-drawer unit

Aisle space calculated for this package is based on an 84" wide box.

Packages BTS-12 and BTL-12 are designed for boxes with side access. For boxes with no side access, it is recommended to reposition the C4-BA13-3 bottle rack.



## BTL-12

### HVAC

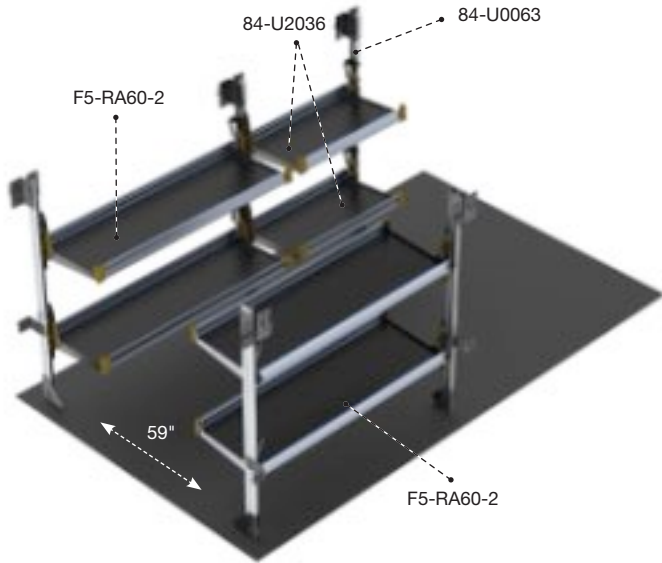
Steel	Long 14+	High Roof
393 lbs	6.1 hrs	Yes

Qty	Part	Description
1	C4-BA13-3	3 Tier refrigerant rack for large bottles
1	6063	Paper holder, extra deep, 5 slots
1	6070	6" Hook, 3" opening, painted
1	6072	8" Swivel hook, 4" opening, painted
1	6088	Large aluminum bottle holder, with two black nylon straps
10	62-U1114	14" Deep plastic bin
2	62-UDR14	Set of 5 dividers for a 14" shelf
1	77-U1060	Adjustable shelving door unit - 57" W - for 60" shelves
3	N5-RS60-4	Steel shelving units, 14" D x 60" W x 62" H
2	X50-B	Compact 2-drawer unit

Aisle space calculated for this package is based on an 84" wide box.

HVAC

# DELIVERY



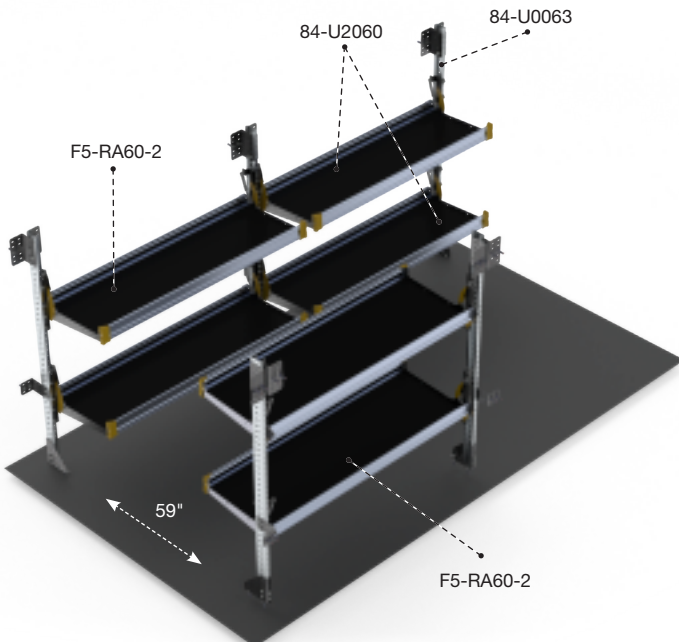
## BTS-19 DELIVERY

Aluminum	Short 10+	High Roof
212 lbs	4.3 hrs	Yes

Qty	Part	Description
1	<b>84-U0063</b>	Post assembly for fold-away shelving 63"
2	<b>84-U2036</b>	Fold-away shelf tray, 20" D x 36" W
2	<b>F5-RA60-2</b>	Fold-away unit, 2 levels, 25" D x 60" W x 63" H

Aisle space calculated for this package is based on an 84" wide box.

DELIVERY



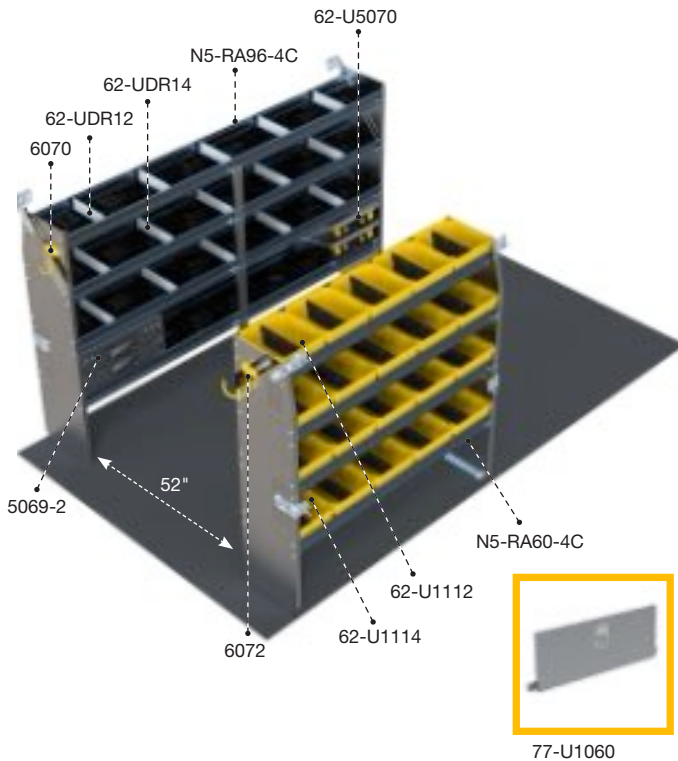
## BTL-19 DELIVERY

Aluminum	Long 14+	High Roof
226 lbs	4.3 hrs	Yes

Qty	Part	Description
1	<b>84-U0063</b>	Post assembly for fold-away shelving 63"
2	<b>84-U2060</b>	Fold-away shelf tray, 60" W x 20" D
2	<b>F5-RA60-2</b>	Fold-away unit, 2 levels, 25" D x 60" W x 63" H

Aisle space calculated for this package is based on an 84" wide box.



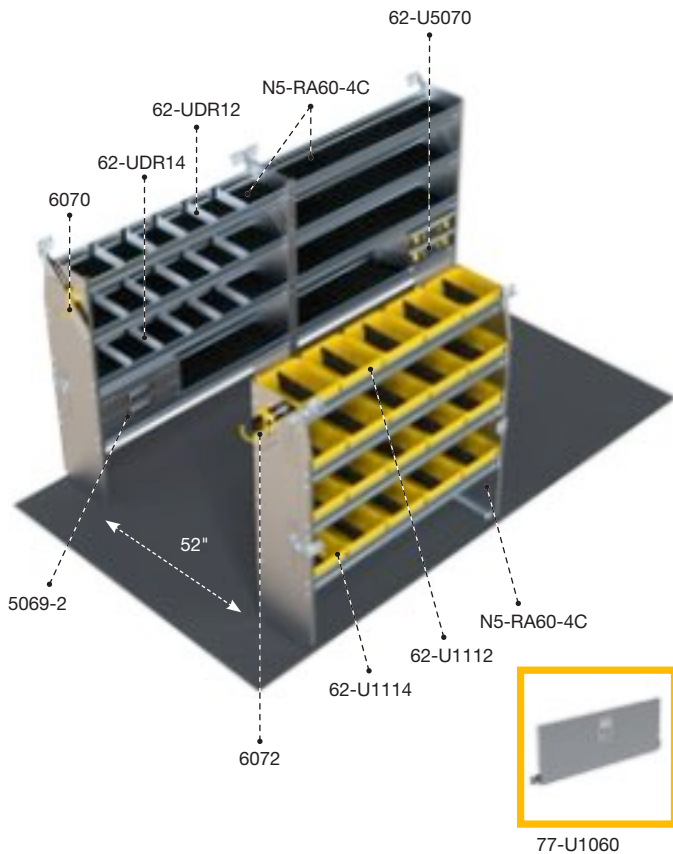


## BTS-27 ALUMINUM

Aluminum	Short 10+	High Roof
246 lbs	4.6 hrs	Yes

Qty	Part	Description
1	5069-2	2-Drawer cabinet
2	62-U5070	Partskeeper carry case with holder
1	6070	6" Hook, 3" opening, painted
1	6072	8" Swivel hook, 4" opening, painted
5	62-U1112	12" Deep plastic bin
15	62-U1114	14" Deep plastic bin
1	62-UDR12	Set of 5 dividers for a 12" shelf
2	62-UDR14	Set of 5 dividers for a 14" shelf
1	77-U1060	Adjustable shelving door unit - 57" W - for 60" shelves
1	N5-RA60-4C	Composite Aluminum shelving unit, 60", 14"D x 60" W x 62"H
1	N5-RA96-4C	Composite Aluminum shelving unit, 96", 14"D x 96" W x 62"H

Aisle space calculated for this package is based on an 84" wide box.



## BTL-27 ALUMINUM

Aluminum	Long 14+	High Roof
281 lbs	6.8 hrs	Yes

Qty	Part	Description
1	5069-2	2-Drawer cabinet
2	62-U5070	Partskeeper carry case with holder
1	6070	6" Hook, 3" opening, painted
1	6072	8" Swivel hook, 4" opening, painted
5	62-U1112	12" Deep plastic bin
15	62-U1114	14" Deep plastic bin
1	62-UDR12	Set of 5 dividers for a 12" shelf
2	62-UDR14	Set of 5 dividers for a 14" shelf
1	77-U1060	Adjustable shelving door unit - 57" W - for 60" shelves
3	N5-RA60-4C	Composite Aluminum shelving units, 60", 14"D x 60" W x 62"H

Aisle space calculated for this package is based on an 84" wide box.

# STORAGE UNITS

## STORAGE UNITS

Ergonomic storage solutions for the cargo space in your vehicle.



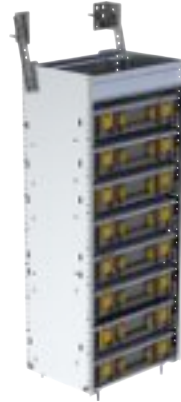
**62-U5079**

Partskeeper carry case



**C2-PA18-4**

Aluminum Partskeeper cabinet with 4 carry cases



**C4-PA18-8**

Aluminum Partskeeper cabinet with 8 carry cases



**C5-PA18-8**

Aluminum Partskeeper cabinet with 8 carry cases and 2 shelves



**N4-PS20-8**

Steel Partskeeper cabinet with 8 carry cases



**N5-LS16-1**

Steel locker with top shelf and 2 hooks



**S3-WA48-0**

Workbench, with hardwood top, one end panel

Compatible cabinets  
5060-5, 5060-6, 5060-8



**S3-WA48-1**

Workbench, aluminum with hardwood top, 1 shelf tray



**N5-PS20-8**

Steel Partskeeper cabinet with 8 carry cases and 2 shelves

STORAGE UNITS

# ACCESSORIES

Choose the finishing details to tailor the upfit to your specific needs.

## CARGO HOLDERS

Increase organization by giving a specific spot to store your equipment. Instead of being loose on the floor, your reels, cans etc. can be secured within easy reach from the door.



**7124**  
Reel Holder with two 5/8" diameter rods



**6057**  
Can Holder



**6068**  
Hard Hat Holder, painted wire



**6063**  
Paper Holder, extra deep, 5 slots

## STORAGE HOOKS

Keep frequently used items such as hats, vests and extension cords hanging within easy reach while on the road.



**6070**  
6" Hook, 3" opening, painted



**6071**  
Triple 6" Hook, 3" opening, painted



**6073**  
Large aluminum movable Hook, 6.5" opening

# DRAWERS



SCAN AND VISIT OUR WEBSITE  
TO VIEW MORE ACCESSORIES

## GRAB HANDLE

It is always useful to have something to hold onto when climbing into your van. Grab handles can also be used to tie down extra cargo during transport.



**6093-27**

Large grab handle

## LED LIGHTING

Keeps the cargo space bright, making visibility easy, no matter what time of day or night. Eliminate any chance of injury when searching through your tools in the dark.



**6092-42**

Universal LED light kit for vans  
(12V DC / 1200 Lm / 10W)

# DRAWERS

Increase storage and organization with Ranger Design's line of drawer units.



**5010**

Partslider drawer



**5020**

Tool drawer 48"D x 14"W x 16"H



**5048**

Top edge, for 5010 Partslider



**TOOL DRAWER TIP:** Stack these drawers for maximum efficiency

# TURN-KEY FLEET SERVICES



## Ship Through or Local Installation Across North America for all Types of Cargo Vans

We are pleased to offer an efficient, personalized service to answer all questions regarding:

### 1. Analysis

- › Cargo Needs Analysis
- › Custom 3D CAD Layouts
- › Hands-on Equipment Demo

### 2. Testing

- › Test Fitting
- › Pilot Build and Review
- › Package Optimization based on Technician Feedback

### 3. Delivery

- › Delivery, Production, Installation Planning and Scheduling
- › Vehicle Status Tracking

### 4. Service

- › Dedicated Fleet Account Management Team
- › Distributor Service Support Network
- › Live Customer Service



**MAXIMIZE CARGO CAPACITY &  
VEHICLE PERFORMANCE WITH  
ORGANIZED STORAGE SYSTEMS**

When you want the perfect upfit solution for your work vehicle, turn to Ranger Design. Crash-tested for toughness, Ranger Design's shelving and upfits will take whatever abuse you can dish out. Their unsurpassed craftsmanship, combined with ideal fit and finish, provide a quiet ride with no rattles.



**CONTACT US**

[cs@rangerdesign.com](mailto:cs@rangerdesign.com)

1-800-565-5321

[rangerdesign.com](http://rangerdesign.com)

